

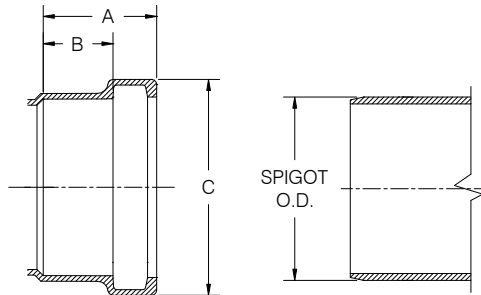
# HARCO SDR-35 PVC GASKETED SEWER FITTINGS

## DESIGN DATA

### Applicable Standards

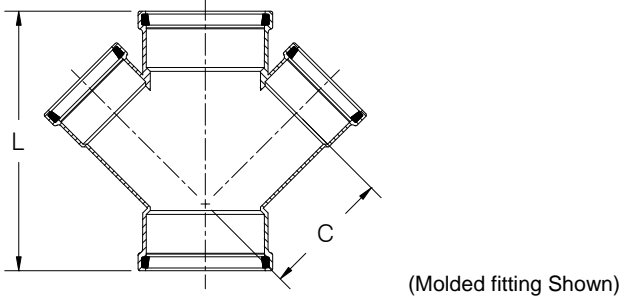
Fittings:	ASTM D-3034, F-1336
Materials:	ASTM D-1784
Joints:	ASTM D-3212
Gaskets:	ASTM F-477
Wall Thickness:	SDR-35
Installation:	ASTM D-2321

### BELL SPECIFICATION



SIZE	STYLE	A	B	C	Pipe O.D.
4	Molded	2.72	1.8	5.19	4.215
6	Molded	3.47	2.5	7.38	6.275
8	Molded	4.02	3.0	9.62	8.40
10	Fab/Molded	7.5	4.8	10.6/10.8	10.50
12	Fab/Molded	7.5	4.8	12.6/14.0	12.50
15	Fab	7.5	4.8	17.1	15.3

### DOUBLE WYE GxGxG



SIZE	PART No.	STYLE	C	L	WT. (approx.)
4X4	35-040404	Fab	5.2	11.8	3.0
6X4	35-040604	Molded	6.8	16.0	5.0
6X6	35-040606	Fab	8.0	16.0	8.0
8X4	35-040804	Fab	8.0	15.0	9.3
8X6	35-040806	Fab	9.2	18.5	11.9

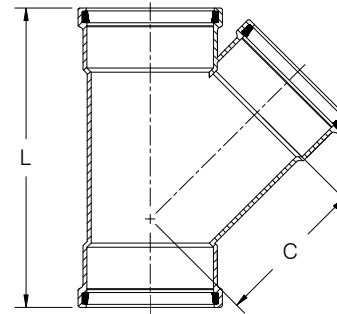
### NOTES:

- All lay lengths & weights are approximate and are subject to change without notice.
- Fabricated fitting configurations may vary.

### CAUTION: Vertical risers are not recommended.

Vertical risers are subject to problems without special consideration of soil/pipe interaction, dead & live loads, and installation procedures.

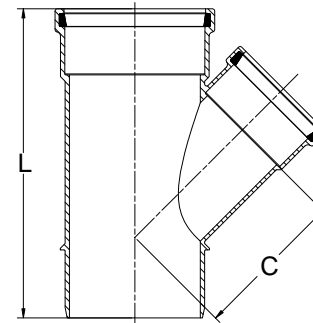
### 45° WYE GxGxG



(Molded fitting Shown)

SIZE	PART No.	STYLE	C	L	WT. (approx.)
4X4	35-010404	Molded	5.2	11.8	2.4
6X4	35-010604	Molded	6.8	16.0	4.8
6X6	35-010606	Molded	8.0	16.0	5.6
8X4	35-010804	Molded	8.7	15.0	7.3
8X6	35-010806	Molded	9.2	18.5	9.4
8X8	35-010808	Molded	10.2	20.5	12.1
10X4	35-011004	Fab	12.5	26.0	14.0
10X6	35-011006	Fab	12.5	29.0	17.0
10X8	35-011008	Fab	13.8	31.5	20.0
10X10	35-011010	Fab	15.0	35.5	27.0
12X4	35-011204	Fab	13.8	27.0	21.0
12X6	35-011206	Fab	13.8	30.0	24.0
12X8	35-011208	Fab	15.1	32.5	28.0
12X10	35-011210	Fab	15.3	36.5	33.0
12X12	35-011212	Fab	18.1	39.5	44.0
15X4	35-011504	Fab	15.7	29.0	32.0
15X6	35-011506	Fab	15.7	32.0	36.0
15X8	35-011508	Fab	17.0	34.5	40.0
15X10	35-011510	Fab	18.2	38.5	50.0
15X12	35-011512	Fab	20.0	41.5	59.0
15X15	35-011515	Fab	22.0	46.0	66.0

### 45° WYE GxSxG



(Molded fitting Shown)

SIZE	PART No.	STYLE	C	L	WT. (approx.)
4X4	35-020404	Molded	5.2	11.8	2.0
6X4	35-020604	Molded	6.8	16.0	4.3
6X6	35-020606	Molded	8.0	16.0	5.4
8X4	35-020804	Molded	8.7	15.0	6.6
8X6	35-020806	Molded	9.2	18.5	8.5
8X8	35-020808	Molded	10.2	20.0	11.6

CALL FOR OTHER SIZES, CONFIGURATIONS & GASKET MATERIALS.



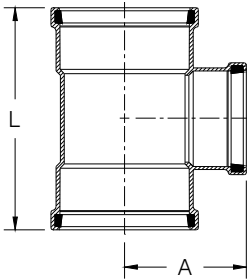
### THE HARRINGTON CORPORATION

P.O. BOX 10335 • LYNCHBURG VIRGINIA 24506 • PLANT 3721 COHEN PLACE • LYNCHBURG VIRGINIA 24501  
 PHONE: (434) 845-7094 • FAX: (434) 845-8562 • E-MAIL: [sales@harcofittings.com](mailto:sales@harcofittings.com)

# HARCO SDR-35 PVC GASKETED SEWER FITTINGS

## DESIGN DATA

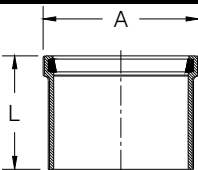
### TEE GxGxG



(Molded fitting Shown)

SIZE	PART No.	STYLE	A	L	WT. (approx.)
4X4	35-120404	Molded	4.9	10.0	1.9
6X4	35-120604	Molded	5.9	11.7	3.9
6X6	35-120606	Molded	6.8	13.7	4.5
8X4	35-120804	Molded	7.0	13.0	7.0
8X6	35-120806	Molded	7.9	15.0	8.1
8X8	35-120808	Molded	8.6	17.9	9.4
10X4	35-121004	Fab	12.7	23.5	14.0
10X6	35-121006	Fab	13.2	25.2	16.0
10X8	35-121008	Fab	13.7	27.5	17.0
10X10	35-121010	Fab	15.2	29.5	23.0
12X4	35-121204	Fab	13.6	24.5	20.0
12X6	35-121206	Fab	14.1	26.5	23.0
12X8	35-121208	Fab	14.6	28.5	25.0
12X10	35-121210	Fab	16.1	30.5	29.0
12X12	35-121212	Fab	16.6	32.5	31.0
15X4	35-121504	Fab	15.0	26.5	31.0
15X6	35-121506	Fab	15.5	28.5	34.0
15X8	35-121508	Fab	16.0	30.5	36.0
15X10	35-121510	Fab	17.5	32.5	41.0
15X12	35-121512	Fab	18.0	34.5	45.0
15X15	35-121515	Fab	19.0	37.5	61.0

### MANHOLE ADAPTERS (SINGLE BELL)



Note: Adapter has a sand coated exterior surface

(Molded fitting Shown)

SIZE	PART No.	STYLE	A	L	WT. (approx.)
4	35-5804	Molded	5.2	4.3	1.3
6	35-5806	Molded	7.4	6.0	2.6
8	35-5808	Molded	9.6	7.0	4.6
10	35-5810	Fab	12.3	6.3	6.1
12	35-5812	Fab	14.5	6.8	9.1
15	35-5815	Fab	17.5	7.3	11.5

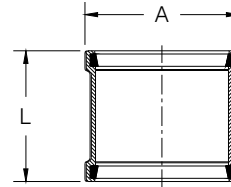
#### NOTES:

- All lay lengths & weights are approximate and are subject to change without notice.
- Fabricated fitting configurations may vary.

#### CAUTION: Vertical risers are not recommended.

Vertical risers are subject to problems without special consideration of soil/pipe interaction, dead & live loads, and installation procedures.

### MANHOLE ADAPTERS (DOUBLE BELL)

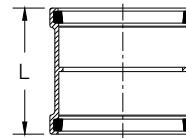


Note: Adapter has a sand coated exterior surface

(Molded fitting Shown)

SIZE	PART No.	STYLE	A	L	WT. (approx.)
4	35-5704	Molded	5.6	5.6	0.9
6	35-5706	Molded	7.1	7.1	3.9
8	35-5708	Molded	8.3	8.3	7.1
10	35-5710	Fab	12.5	12.5	12.0
12	35-5712	Fab	13.5	11.5	16.0
15	35-5715	Fab	14.5	14.5	23.0

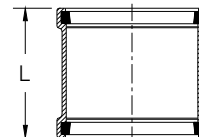
### LINE COUPLING (w/ Stop)



(Molded fitting Shown)

SIZE	PART No.	STYLE	L	WT. (approx.)
4	35-0804	Molded	5.5	1.0
6	35-0806	Molded	7.1	2.2
8	35-0808	Molded	8.3	4.3
10	35-0810	Fab	13.5	6.0
12	35-0812	Fab	14.5	12.0
15	35-0815	Fab	17.0	22.0

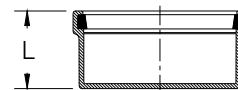
### REPAIR COUPLING (Sleeve)



(Molded fitting Shown)

SIZE	PART No.	STYLE	L	WT. (approx.)
4	35-0904	Molded	5.5	1.1
6	35-0906	Molded	7.1	2.2
8	35-0908	Molded	8.3	4.1
10	35-0910	Fab	12.5	7.0
12	35-0912	Fab	11.5	11.0
15	35-0915	Fab	14.5	17.0

### CAP



(Molded fitting Shown)

SIZE	PART No.	STYLE	L	WT. (approx.)
4	35-4904	Molded	2.7	0.6
6	35-4906	Molded	3.5	1.4
8	35-4908	Molded	4.0	3.0
10	35-4910	Fab	10.5	8.0
12	35-4912	Fab	12.0	12.0
15	35-4915	Fab	14.0	23.0

CALL FOR OTHER SIZES, CONFIGURATIONS & GASKET MATERIALS.



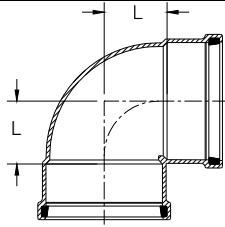
### THE HARRINGTON CORPORATION

P.O. BOX 10335 • LYNCHBURG VIRGINIA 24506 • PLANT 3721 COHEN PLACE • LYNCHBURG VIRGINIA 24501  
 PHONE: (434) 845-7094 • FAX: (434) 845-8562 • E-MAIL: [sales@harcofittings.com](mailto:sales@harcofittings.com)

# HARCO SDR-35 PVC GASKETED SEWER FITTINGS

## DIMENSIONAL DATA

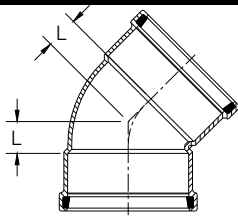
### 90° Bend GxG



(Molded fitting Shown)

SIZE	PART No.	STYLE	L	WT. (approx.)
4	35-1804	Molded	2.4	1.4
6	35-1806	Molded	3.5	3.3
8	35-1808	Molded	4.6	7.0
10	35-1810	Fab	9.0	21.0
12	35-1812	Fab	11.5	30.0
15	35-1815	Fab	12.5	52.0

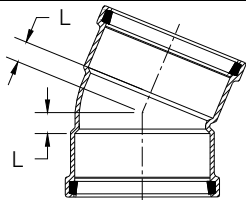
### 45° Bend GxG



(Molded fitting Shown)

SIZE	PART No.	STYLE	L	WT. (approx.)
4	35-2204	Molded	1.2	1.2
6	35-2206	Molded	1.6	2.8
8	35-2208	Molded	2.2	5.7
10	35-2210	Fab	3.3	16.0
12	35-2212	Fab	5.5	24.0
15	35-2215	Fab	5.5	38.0

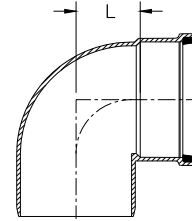
### 22.5° Bend GxG



(Molded fitting Shown)

SIZE	PART No.	STYLE	L	WT. (approx.)
4	35-2404	Molded	0.7	1.1
6	35-2406	Molded	1.1	2.6
8	35-2408	Molded	1.3	5.1
10	35-2410	Fab	2.0	16.0
12	35-2412	Fab	2.5	25.0
15	35-2415	Fab	4.8	40.0

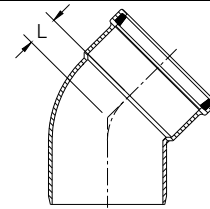
### 90° Bend GxS



(Molded fitting Shown)

SIZE	PART No.	STYLE	L	WT. (approx.)
4	35-1904	Molded	2.4	1.1
6	35-1906	Molded	3.5	2.8
8	35-1908	Molded	4.6	6.1
10	35-1910	Fab	9.0	19.0
12	35-1912	Fab	11.5	30.0
15	35-1915	Fab	12.5	50.0

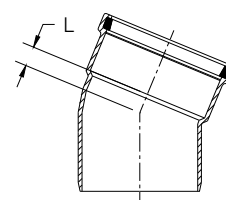
### 45° Bend GxS



(Molded fitting Shown)

SIZE	PART No.	STYLE	L	WT. (approx.)
4	35-2304	Molded	1.2	0.9
6	35-2306	Molded	1.6	2.3
8	35-2308	Molded	2.2	5.0
10	35-2310	Fab	3.3	15.0
12	35-2312	Fab	5.5	23.0
15	35-2315	Fab	5.5	31.0

### 22.5° Bend GxS



(Molded fitting Shown)

SIZE	PART No.	STYLE	L	WT. (approx.)
4	35-2504	Molded	0.7	0.9
6	35-2506	Molded	1.1	2.1
8	35-2508	Molded	1.3	4.4
10	35-2510	Fab	2.0	15.0
12	35-2512	Fab	2.5	22.0
15	35-2515	Fab	4.8	33.0

#### NOTES:

- All lay lengths & weights are approximate and are subject to change without notice.
- Fabricated fitting configurations may vary.

#### CAUTION: Vertical risers are not recommended.

Vertical risers are subject to problems without special consideration of soil/pipe interaction, dead & live loads, and installation procedures.

CALL FOR OTHER SIZES, CONFIGURATIONS & GASKET MATERIALS.



### THE HARRINGTON CORPORATION

P.O. BOX 10335 • LYNCHBURG VIRGINIA 24506 • PLANT 3721 COHEN PLACE • LYNCHBURG VIRGINIA 24501  
 PHONE: (434) 845-7094 • FAX: (434) 845-8562 • E-MAIL: [sales@harcofittings.com](mailto:sales@harcofittings.com)

# HARCO SDR-35 PVC GASKETED SEWER FITTINGS

## DIMENSIONAL DATA

TEE- WYE GxGxG					
<p>(Molded fitting Shown)</p>					
SIZE	PART No.	STYLE	C	L	WT. (approx.)
4X4	35-050404	Molded	3.7	11.8	2.3
6X4	35-050604	Molded	4.6	15.5	4.6
6X6	35-050606	Molded	5.1	15.5	5.3
8X4	35-050804	Molded	5.6	14.2	6.8
8X6	35-050806	Molded	6.1	16.4	8.4
8X8	35-050808	Molded	6.3	17.8	9.6
10X4	35-051004	Fab	12.1	26.0	16.0
10X6	35-051006	Fab	13.8	29.0	19.0
12X4	35-051204	Fab	11.9	27.0	22.0
12X6	35-051206	Fab	14.4	30.0	26.0
15X4	35-051504	Fab	12.6	29.0	33.0
15X6	35-051506	Fab	15.8	32.0	41.0

TEE- WYE GxSxG					
<p>(Molded fitting Shown)</p>					
SIZE	PART No.	STYLE	C	L	WT. (approx.)
4X4	35-060404	Molded	3.7	11.8	2.0
6X4	35-060604	Molded	4.6	15.5	4.1
6X6	35-060606	Molded	5.1	15.5	4.5
8X4	35-060804	Molded	5.6	14.2	6.1
8X6	35-060806	Molded	6.1	16.4	7.6
8X8	35-060808	Molded	6.3	17.8	9.2

### NOTES:

- All lay lengths & weights are approximate and are subject to change without notice.
- Fabricated fitting configurations may vary.

### CAUTION: Vertical risers are not recommended.

Vertical risers are subject to problems without special consideration of soil/pipe interaction, dead & live loads, and installation procedures.

PERMANENT PLUG					
<p>(Molded fitting Shown)</p>					
SIZE	PART No.	STYLE	A	B	WT. (approx.)
4	35-4404	Molded	4.5	2.8	0.4
6	35-4406	Molded	6.7	3.7	1.1
8	35-4408	Molded	8.9	4.3	5.3
10	35-4410	Fab	11.1	6.0	7.0
12	35-4412	Fab	13.2	7.0	10.0
15	35-4415	Fab	16.2	9.0	17.0

TEMPORARY PLUG (made from polyethylene)				
<p>(Molded fitting Shown)</p>				
SIZE	PART No.	STYLE	L	WT. (approx.)
4	35-4704	Molded	4.3	0.2
6	35-4706	Molded	3.8	0.3
8	35-4708	Molded	8.4	0.9

SADDLE WYE				
<p>(Saddle gasket &amp; SS straps not shown) (Molded fitting Shown)</p>				
SIZE	PART No.	STYLE	A	WT. (approx.)
6x4	35-550604	Molded	8.9	1.4
8x4	35-550804	Molded	10.4	1.5
8x6	35-550806	Molded	12.0	3.3
10x4	35-551004	Molded	11.9	1.2
10x6	35-551006	Molded	13.0	3.3
12x4	35-551204	Molded	13.4	1.2
12x6	35-551206	Molded	14.3	3.8

SADDLE TEE				
<p>(Saddle gasket &amp; SS straps not shown) (Molded fitting Shown)</p>				
SIZE	PART No.	STYLE	A	WT. (approx.)
6x4	35-560604	Molded	3.3	1.0
8x4	35-560804	Molded	4.5	1.2
8x6	35-560806	Molded	4.7	2.4
10x4	35-561004	Molded	5.5	3.3
10x6	35-561006	Molded	5.7	2.3
12x4	35-561204	Molded	6.5	1.2
12x6	35-561206	Molded	6.6	3.1

CALL FOR OTHER SIZES, CONFIGURATIONS & GASKET MATERIALS.



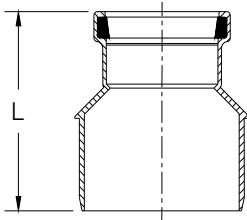
### THE HARRINGTON CORPORATION

P.O. BOX 10335 • LYNCHBURG VIRGINIA 24506 • PLANT 3721 COHEN PLACE • LYNCHBURG VIRGINIA 24501  
 PHONE: (434) 845-7094 • FAX: (434) 845-8562 • E-MAIL: [sales@harcofittings.com](mailto:sales@harcofittings.com)

# HARCO SDR-35 PVC GASKETED SEWER FITTINGS

## DESIGN DATA

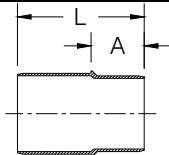
### INCREASER GxS



(Molded fitting Shown)

SIZE	PART No.	STYLE	L	WT. (approx.)
4x6	35-160406	Molded	8.1	1.4
4x8	35-160408	Fab	9.1	2.7
4x10	35-160410	Fab	13.2	7.5
4x12	35-160412	Fab	13.5	11.0
4x15	35-160415	Fab	15.0	19.0
6x8	35-160608	Molded	9.0	3.0
6x10	35-160610	Fab	13.3	7.0
6x12	35-160612	Fab	13.6	13.0
6x15	35-160615	Fab	14.8	17.0
8x10	35-160810	Fab	13.4	9.0
8x12	35-160812	Fab	13.7	12.0
8x15	35-160815	Fab	14.9	19.0
10x12	35-161012	Fab	22.0	16.0
10x15	35-161015	Fab	21.8	21.0
12x15	35-161215	Fab	24.5	24.0

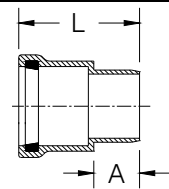
### ADAPTER (Sch. 40 x 3034 SxS)



(Molded fitting Shown)

SIZE	PART No.	STYLE	A	L	WT. (approx.)
4x4	35-4004	Molded	2.8	6.9	1.5
6x6	35-4006	Molded	3.5	8.1	2.9

### ADAPTER (Sch. 40 x 3034 GxS)



(Molded fitting Shown)

SIZE	PART No.	STYLE	A	L	WT. (approx.)
4x4	35-3504	Molded	2.7	7.1	1.6
6x6	35-3506	Molded	3.5	8.4	3.7

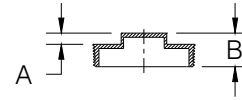
#### NOTES:

- All lay lengths & weights are approximate and are subject to change without notice.
- Fabricated fitting configurations may vary.

#### CAUTION: Vertical risers are not recommended.

Vertical risers are subject to problems without special consideration of soil/pipe interaction, dead & live loads, and installation procedures.

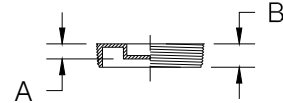
### CLEAN-OUT PLUG (RAISED)



(Molded fitting Shown)

SIZE	PART No.	A	B	WT. (approx.)
4	35-6104	.5	1.5	0.2
6	35-6106	.5	1.5	0.5

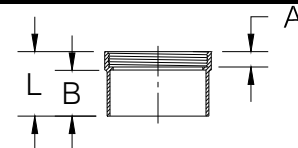
### CLEAN-OUT PLUG (RECESSED)



(Molded fitting Shown)

SIZE	PART No.	A	L	WT. (approx.)
4	35-6204	0.7	1.0	0.2
6	35-6206	0.7	1.0	0.6

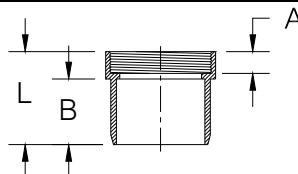
### CLEAN-OUT ADAPTER (HUB)



(Molded fitting Shown)

SIZE	PART No.	A	B	L	WT. (approx.)
4	35-5904	1.0	1.8	2.9	0.5
6	35-5906	1.0	3.0	4.2	0.9

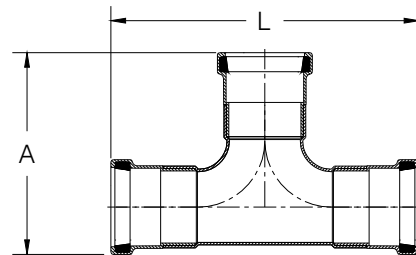
### CLEAN-OUT ADAPTER (SPIGOT)



(Molded fitting Shown)

SIZE	PART No.	A	B	L	WT. (approx.)
4	35-6004	1.0	1.8	7.1	0.6
6	35-6006	1.0	3.0	8.4	0.9

### 2 WAY CLEAN-OUT TEE



(Molded fitting Shown)

SIZE	PART No.	STYLE	A	L	WT. (approx.)
4	35-130404	Fab	11.0	16.9	3.0

CALL FOR OTHER SIZES, CONFIGURATIONS & GASKET MATERIALS.



### THE HARRINGTON CORPORATION

P.O. BOX 10335 • LYNCHBURG VIRGINIA 24506 • PLANT 3721 COHEN PLACE • LYNCHBURG VIRGINIA 24501  
 PHONE: (434) 845-7094 • FAX: (434) 845-8562 • E-MAIL: [sales@harcofittings.com](mailto:sales@harcofittings.com)